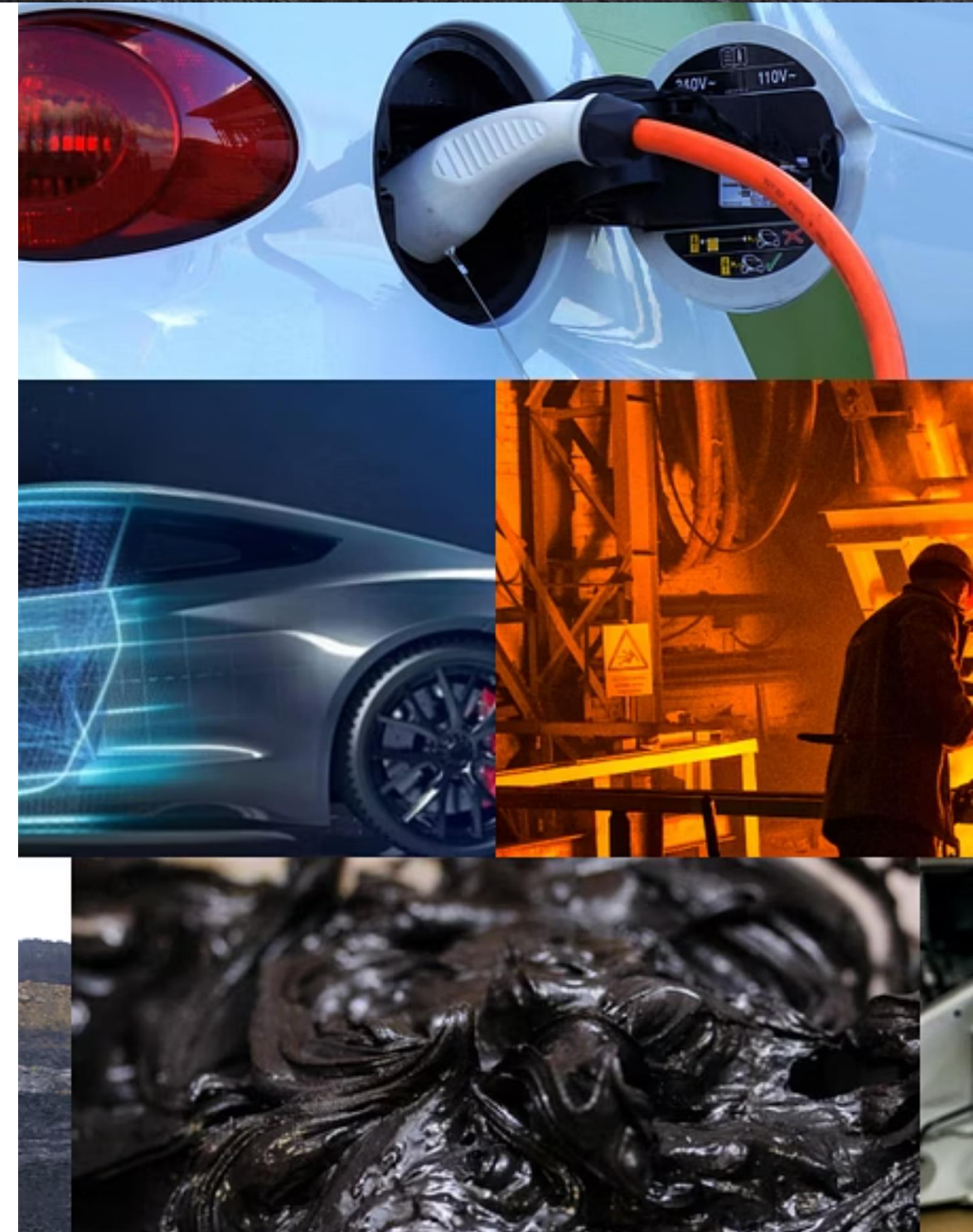


GRAPHANO ENERGY LTD.

THE POWER OF CARBON

Graphano Energy Limited (TSX-V: GEL; FSE:97G0; OTCQB:GELEF)

June 2026



Disclaimer

This presentation contains certain forward-looking statements that reflect the current views and/or expectations of Graphano Energy Limited ("Graphano" or the "Company") with respect to its performance, business and future events, including statements regarding the Company's beliefs regarding future exploration of its projects, future drilling locations and its plans and budgets, exploration and permitting timelines, future acquisition opportunities and exploration plans.

Forward-looking statements are based on the then-current expectations, beliefs, assumptions, estimates and forecasts about the business and the markets in which the Company operates, including that: the current price of and demand for minerals being targeted by the Company will be sustained or will improve; the Company's current exploration programs and objectives can be achieved; the Company will not experience any material accident, labour dispute or equipment failure; financing will be available if and when needed on reasonable terms; and the Company will be able to identify and acquire additional mineral interests on reasonable terms or at all. Investors are cautioned that all forward-looking statements involve risks and uncertainties, including: that the Company has a limited operating history; that resource exploration and development is a speculative business; that the Company may lose or abandon its property interests; that the Company's properties are in the exploration stage and without known bodies of commercial ore; that the Company may not be able to obtain all necessary permits and approvals on any of its properties; that environmental laws and regulations may become more onerous; that the Company may not be able to raise additional funds when necessary; potential defects in title to the Company's properties; fluctuations in currency exchange rates; changes in tax or royalty rates; operating hazards and risks; potential inability to find suitable acquisition opportunities and/or complete the same and other factors listed in the Company's public filings, including its Management's Discussion and Analysis, a copy of which is available under Graphano's profile at www.sedar.com.

Although Graphano has attempted to identify important factors that could cause actual actions, events or results to differ materially from those described in forward-looking information, there may be other factors that cause, actions, events or results not to be as anticipated, estimated or intended. There can be no assurance that forward-looking information, or the material factors or assumptions used to develop such forward looking information, will prove to be accurate. Readers are cautioned not to place undue reliance on forward-looking information due to the inherent uncertainty thereof. The Company does not undertake any obligations to release publicly any revisions for updating any voluntary forward-looking statements, except as required by applicable securities law.



The Value Proposition

Strategic Location

Our graphite deposits are adjacent to the only graphite mine in North America (Lac-des-Iles) with ready access to power and transport infrastructure.

Fast-Track to Production

High purity, near-surface resources at LAB and Standard projects being fast-tracked to production through development agreement with Northern Graphite, owner of the LDI plant.

Growth Potential

District-scale exploration upside: 6.5 km conductive trend at Black Pearl with five priority targets, plus new high-grade Black Jack discovery (June 2026).

Geopolitical Advantage

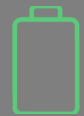
U.S. tariffs on Chinese graphite create pricing floor and urgent need for North American supply, as the U.S. is currently 100% import dependent.

About Graphite: Essential Carbon Material



High Melting Point

Essential material for the refractory industry due to its exceptional thermal resistance (e.g., steel furnaces, cement kilns, glass tanks, copper converters, petrochemical crackers)



Electrical Conductor

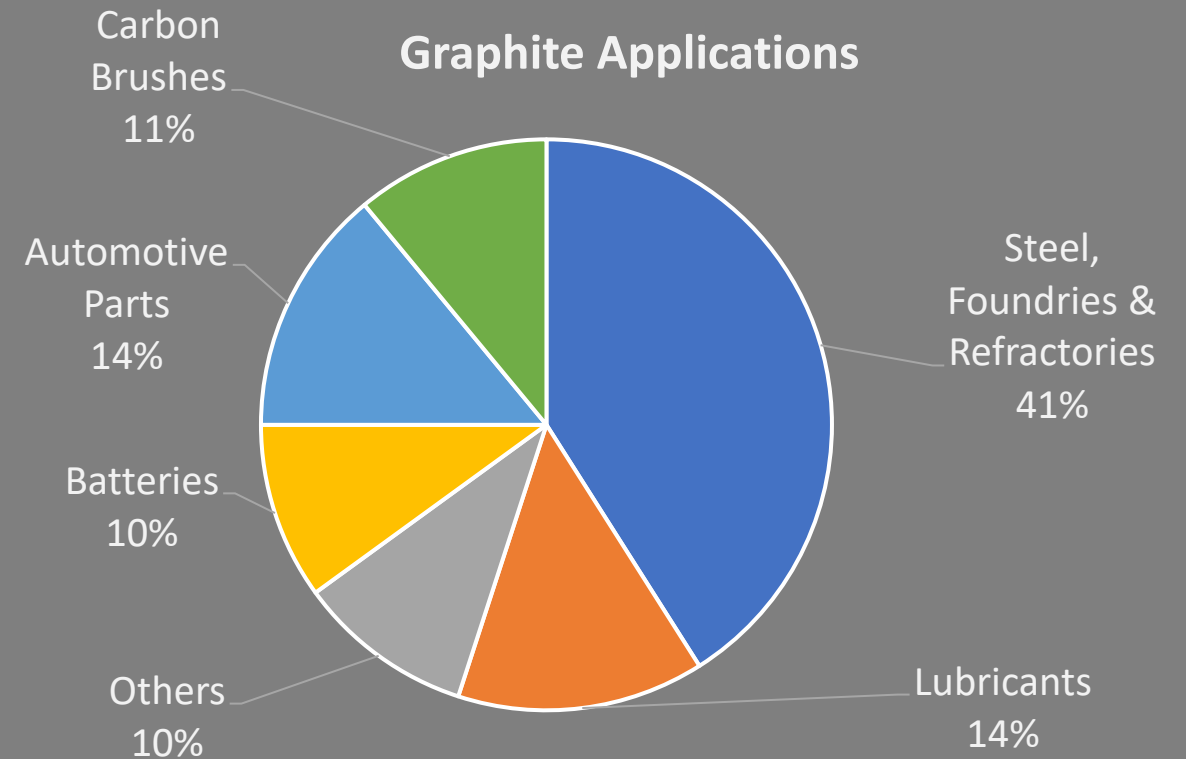
Used as anode material in batteries, critical for energy storage applications



Soft & Slippery

Used in pencils and as a dry lubricant due to its unique physical properties

Supply Concern: China currently dominates global production, accounting for approximately 80% of natural graphite output in 2025.



Graphite Demand for EVs

Current global natural graphite production stands at 1.6 million tonnes annually

The Supply Gap

EV battery demand alone is projected to reach 5 million tonnes, creating a substantial deficit that will require dozens of new graphite mines to open within the next 5-10 years.

5Mt
per year
Projected graphite demand

Number of Gigafactories needed worldwide (for cars)				
Gigafactory output	Car battery size	Factory car output	Number of vehicles needed	Number of Gigafactories
20 GWh/yr	70 kWh	286,000	71 Million	249
35 GWh/yr	70 kWh	500,000	71 Million	142
105 GWh/yr	70 kWh	1.5 Million	71 Million	48
150 GWh/yr	70 kWh	2.1 Million	71 Million	34

3.4Mt
Deficit
Supply gap to be filled

Sources: 1. USGS 2024, 2. CleanTechnica



Geopolitical Pressures Creating Market Opportunity

Import Tariffs

Section 301 tariff on Chinese natural graphite at 25% since Jan 1, 2026.

Price Floor Established

Tariffs sustain a structural price floor, favoring North American supply.

Expedited Permitting

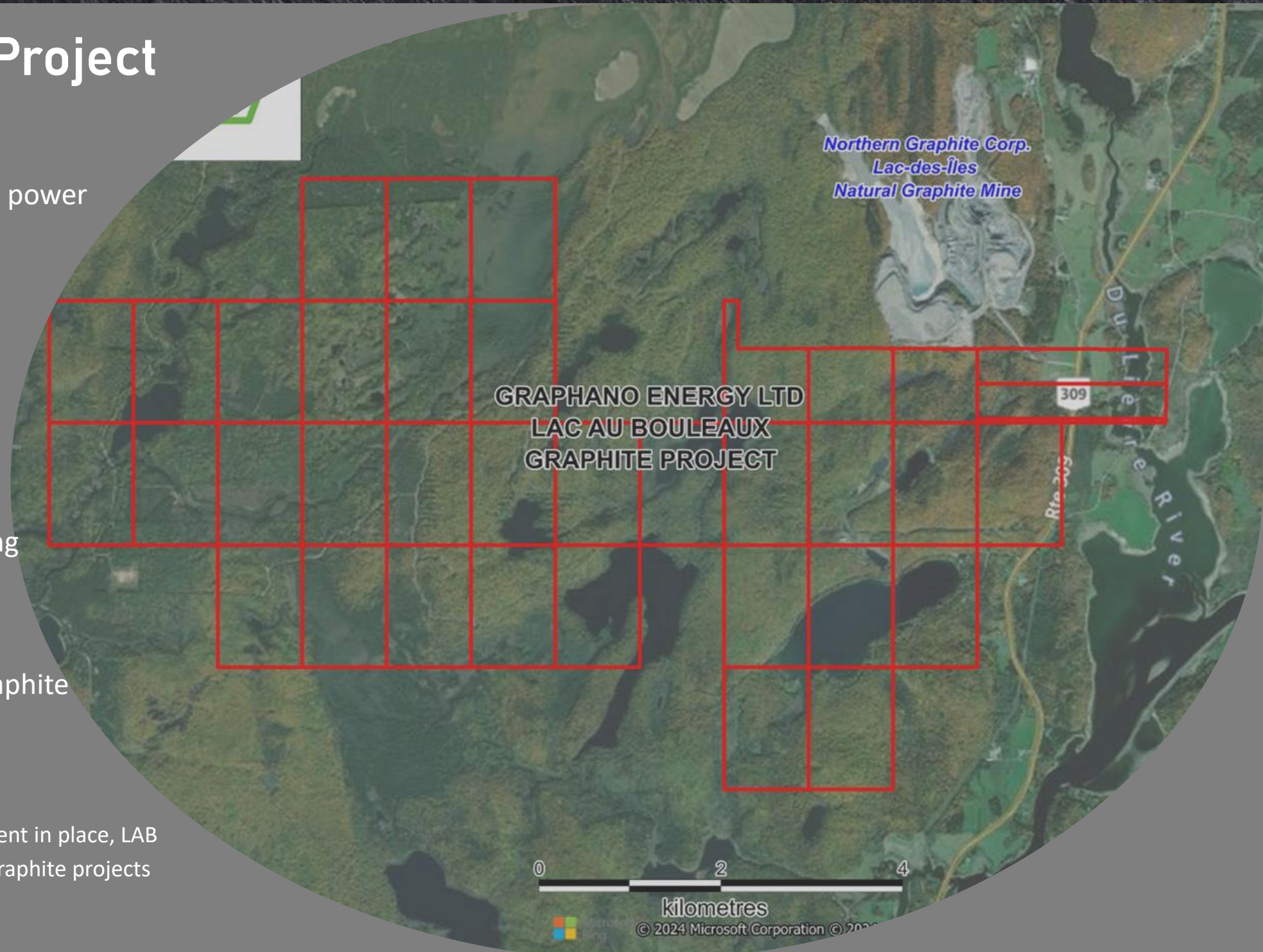
Canada targets ≤ 2 -year federal permitting for critical-mineral projects of national interest.

Strategic Support

Canada's Critical Minerals Strategy offers tax incentives and Indigenous partnership support.

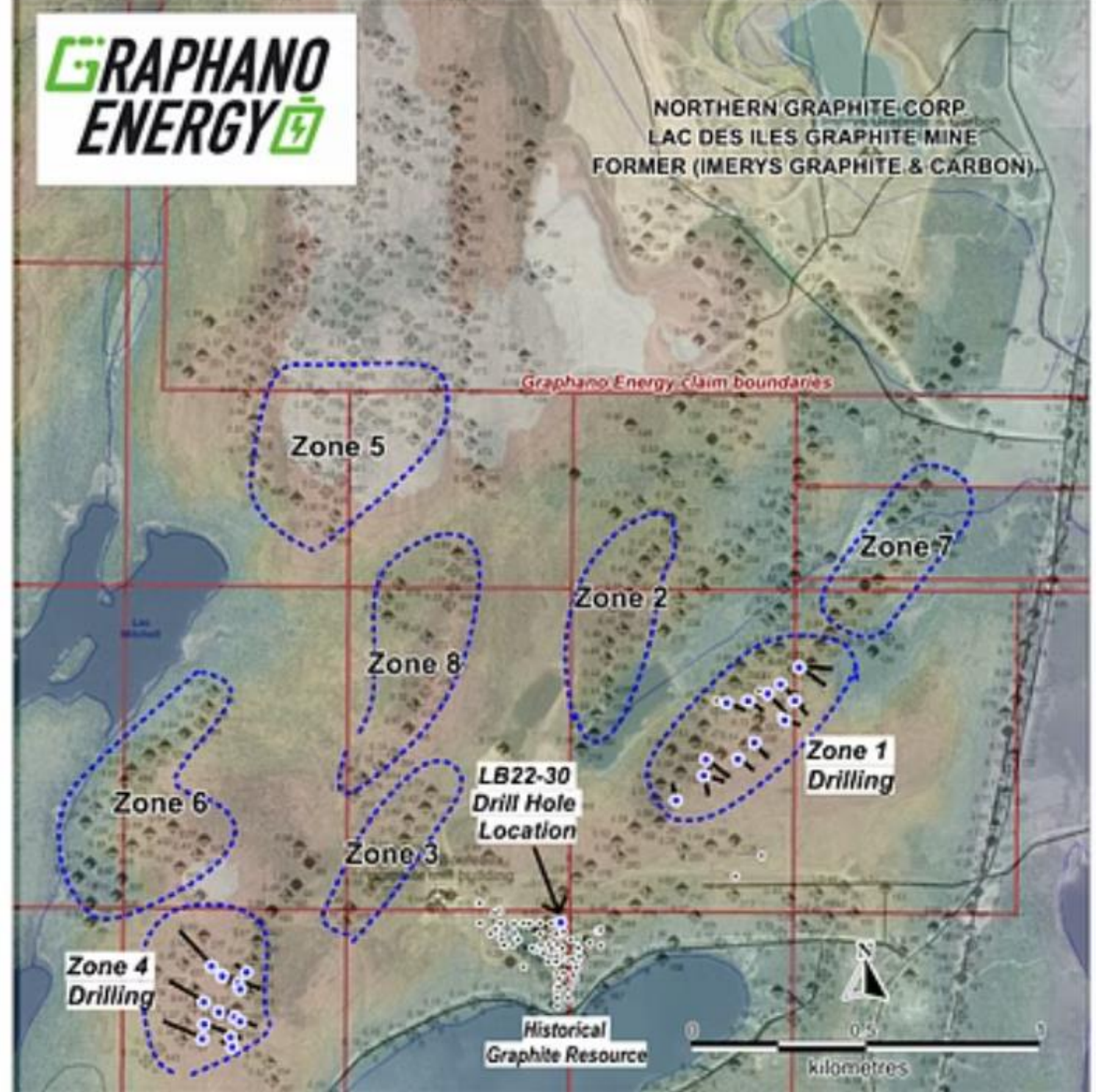
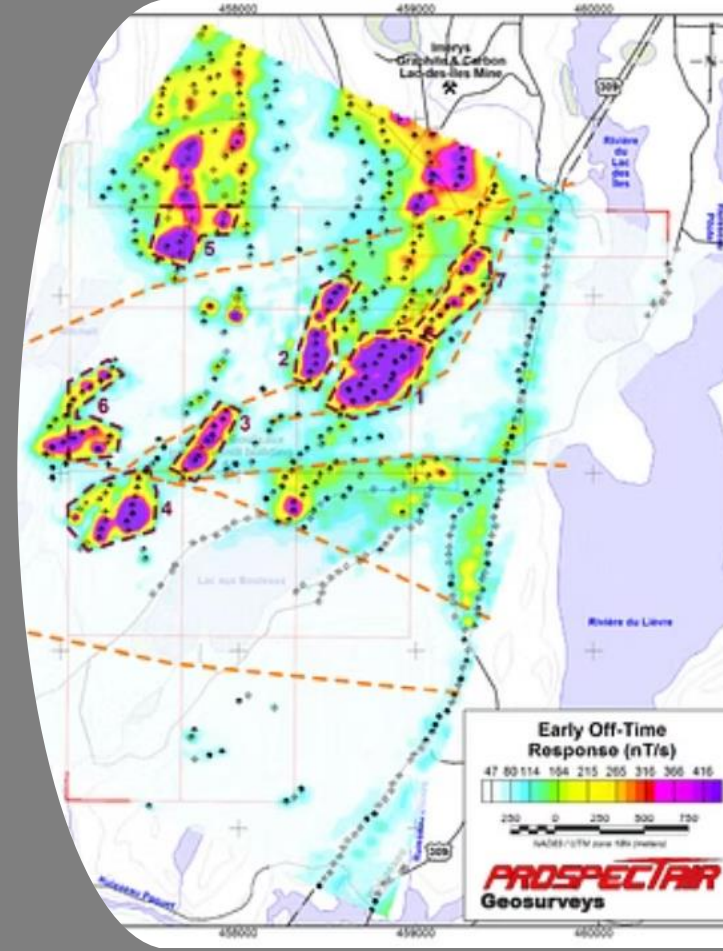
Lac Aux Bouleaux (LAB) Project

- Superior Infrastructure**
Excellent road access and on-site electrical power reduce development costs and timeline
- Premium Resource Quality**
High-grade, near-surface graphite deposit enables efficient extraction with lower operational costs
- Strategic Location**
Property is contiguous to Northern Graphite's Lac-des-Iles mine and processing facility
- Processing Agreement**
Established partnership with Northern Graphite enables accelerated path to production
- Near-Term Production Potential**
With established infrastructure and a processing agreement in place, LAB is positioned as one of North America's most advanced graphite projects nearing production.



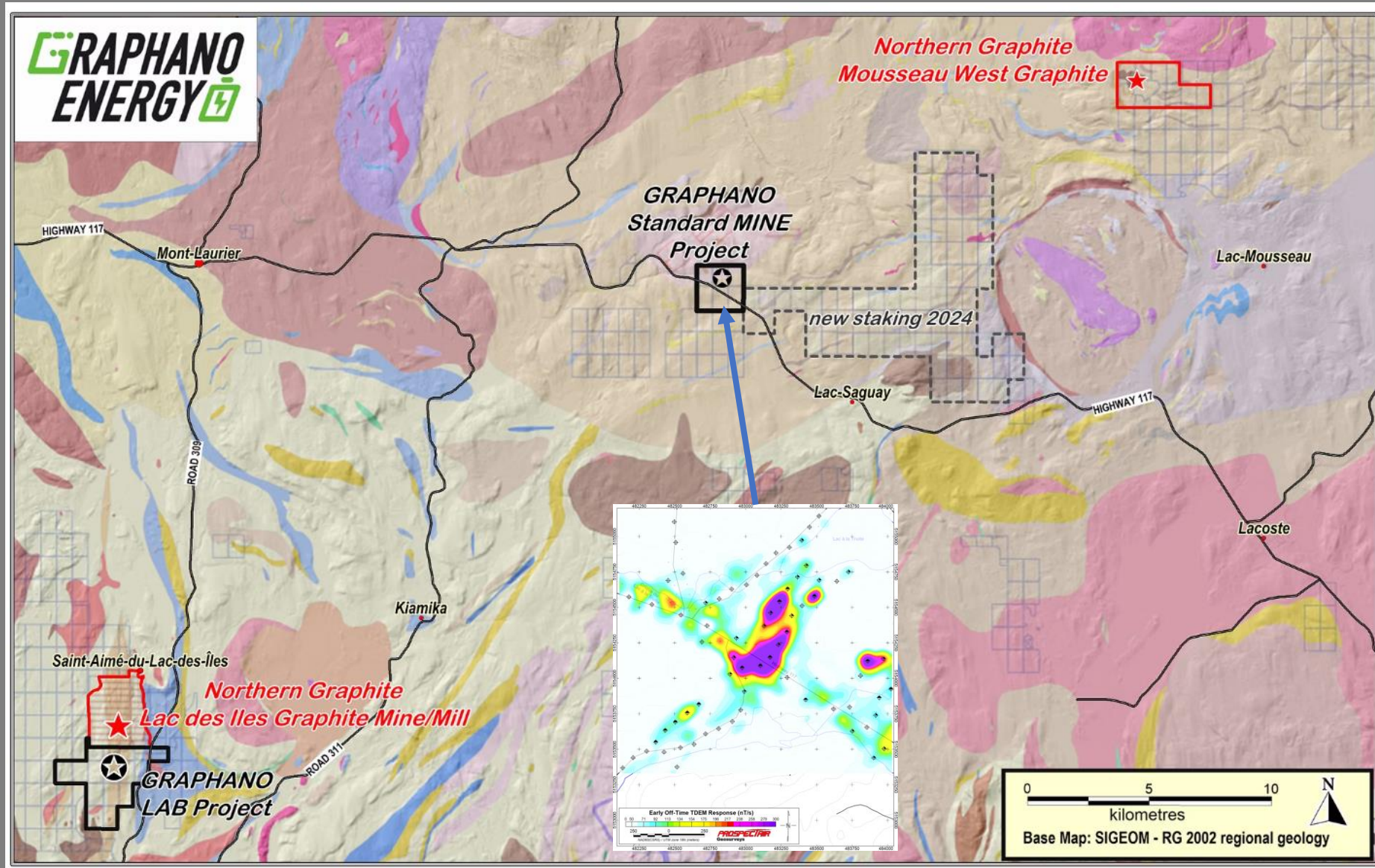
LAB Prospecting Targets

Ground geophysics and Exploration have identified multiple high-potential graphite zones across the property



Drilling and exploration activities are continuing to expand the resource definition across multiple high-grade zones, with updated resource estimates expected in 2026.

Standard Mine Project: Expansion Opportunity



Extensive Land Package
79 claims east of the historical Standard mine, totaling 4,265 hectares

Premium Resource Quality
High-grade graphite deposit near the surface reduces extraction costs

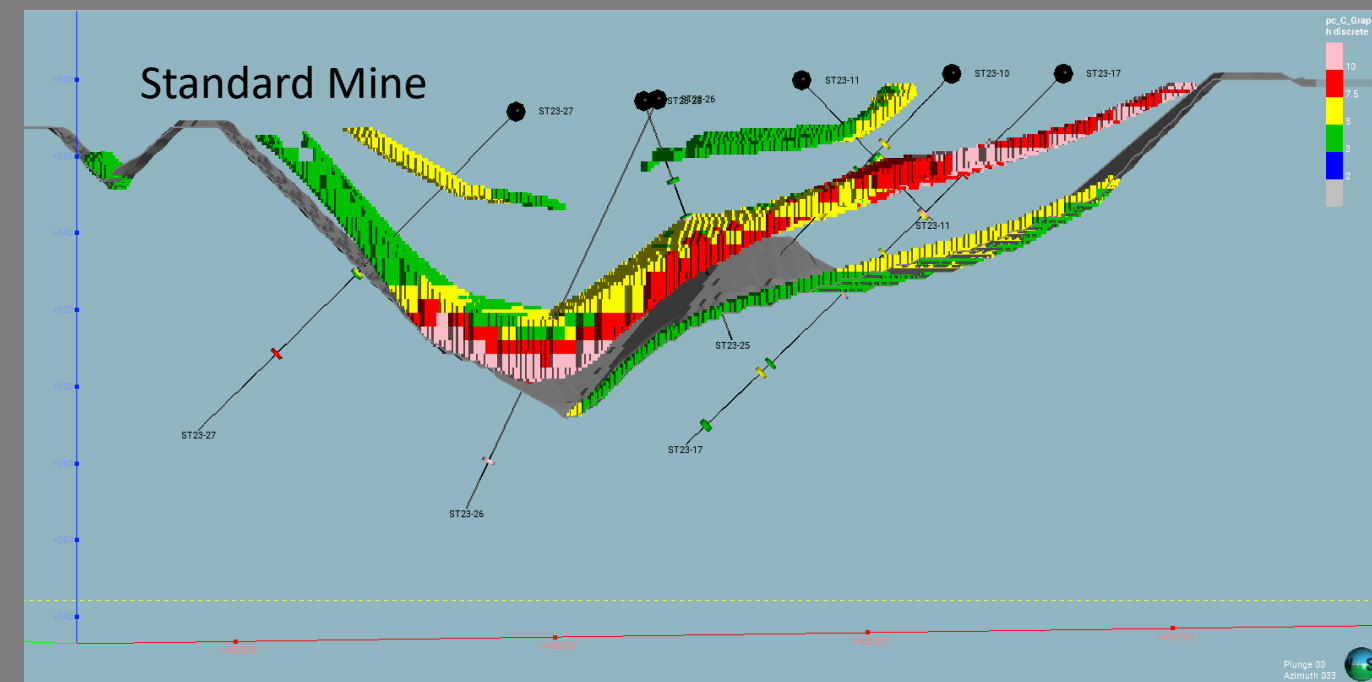
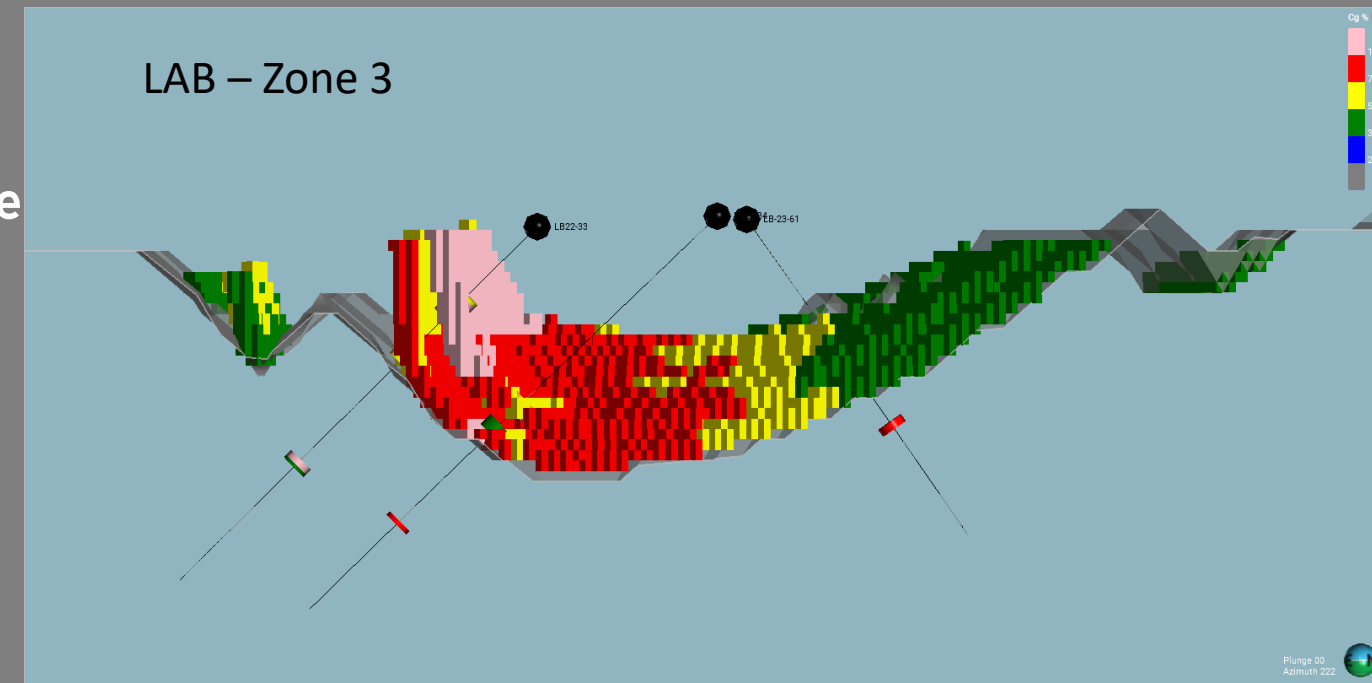
Economic Viability
Strategic proximity to Lac-des-Iles processing plant creates operational synergies

Strategic Graphite Resources

Positioned to become a significant player in the North American graphite supply chain with the Lac-Saguay Project and its multiple high-grade zones at LAB and Standard Mine

Property	Zone	Category	Tonnes	Cg (%)
LAB	Pit Zone	Indicated	250,000	8.96
		Inferred	100,000	7.28
	Zone 1	Indicated	70,000	5.92
		Inferred	120,000	5.81
	Zone 3	Indicated	370,000	7.76
		Inferred	380,000	6.89
Standard	Standard	Indicated	950,000	6.27
		Inferred	980,000	7.16
Total		Indicated	1,640,000	7.00
		Inferred	1,580,000	7.00

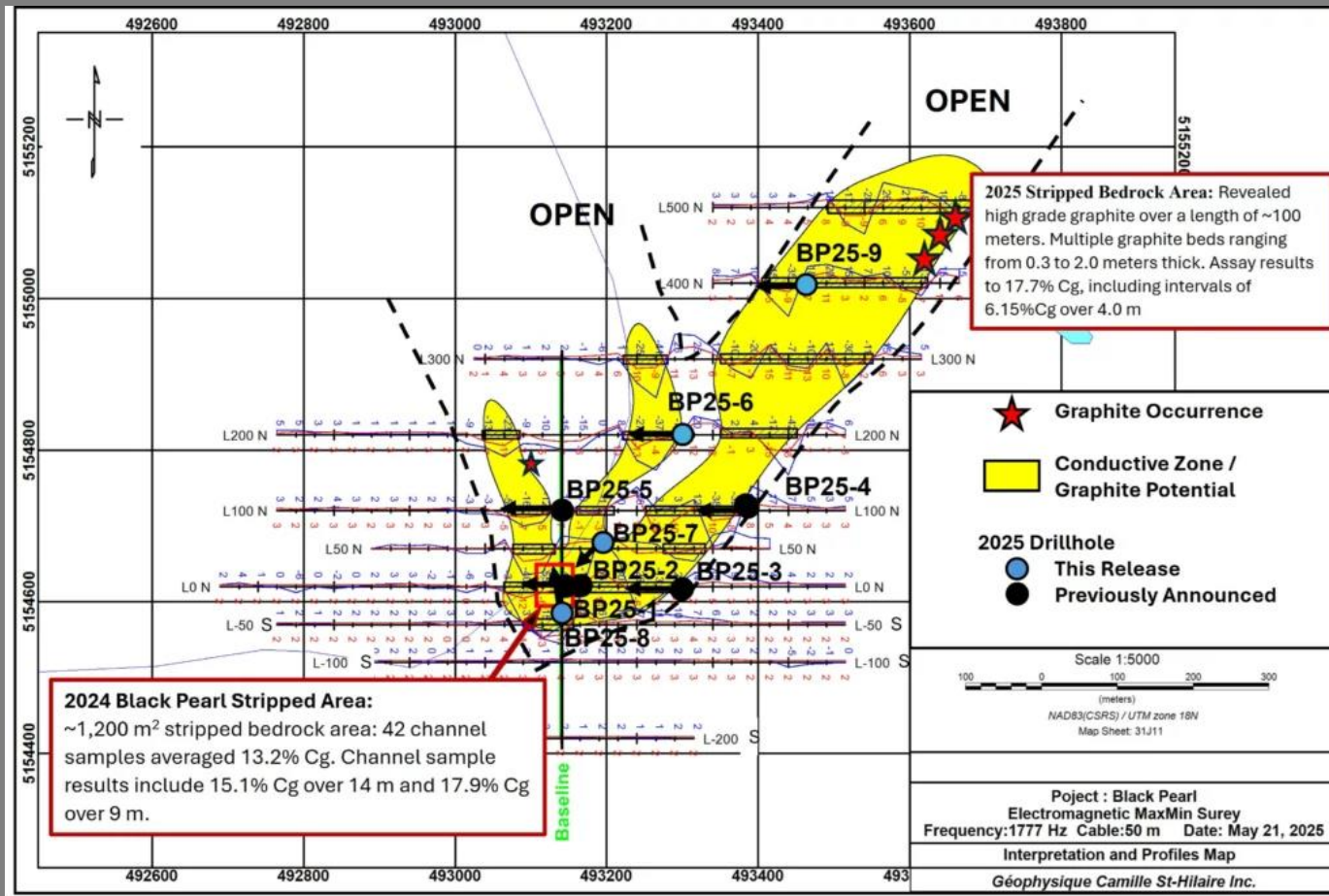
	Category	Cut-off	Tonnes	Cg (%)	Contained Cg(t)
Total	Indicated	3.00%	1,640,000	7.00	115,000
	Inferred	3.00%	1,580,000	7.00	111,000



The resource only includes 3 of the nine zones at Lac-Aux-Bouleaux

Black Pearl Project: From Drilling to District-Scale Discovery

Graphano Energy's inaugural drilling program at the 100% owned Black Pearl graphite project has successfully confirmed extensive near-surface graphite mineralization across multiple conductive trends. The property consists of 84 claims covering 4,149 hectares, located immediately east of the advanced-stage Standard Mine project.



12.25m Broad Mineralization	11.33% High-Grade, Cg Intercept	1000m Eastern Trend Length
---------------------------------------	---	--------------------------------------

Hole BP25-06 returned 4.81% Cg over 12.25 metres, including 6.63% Cg over 7.07 metres at only 25m vertical depth

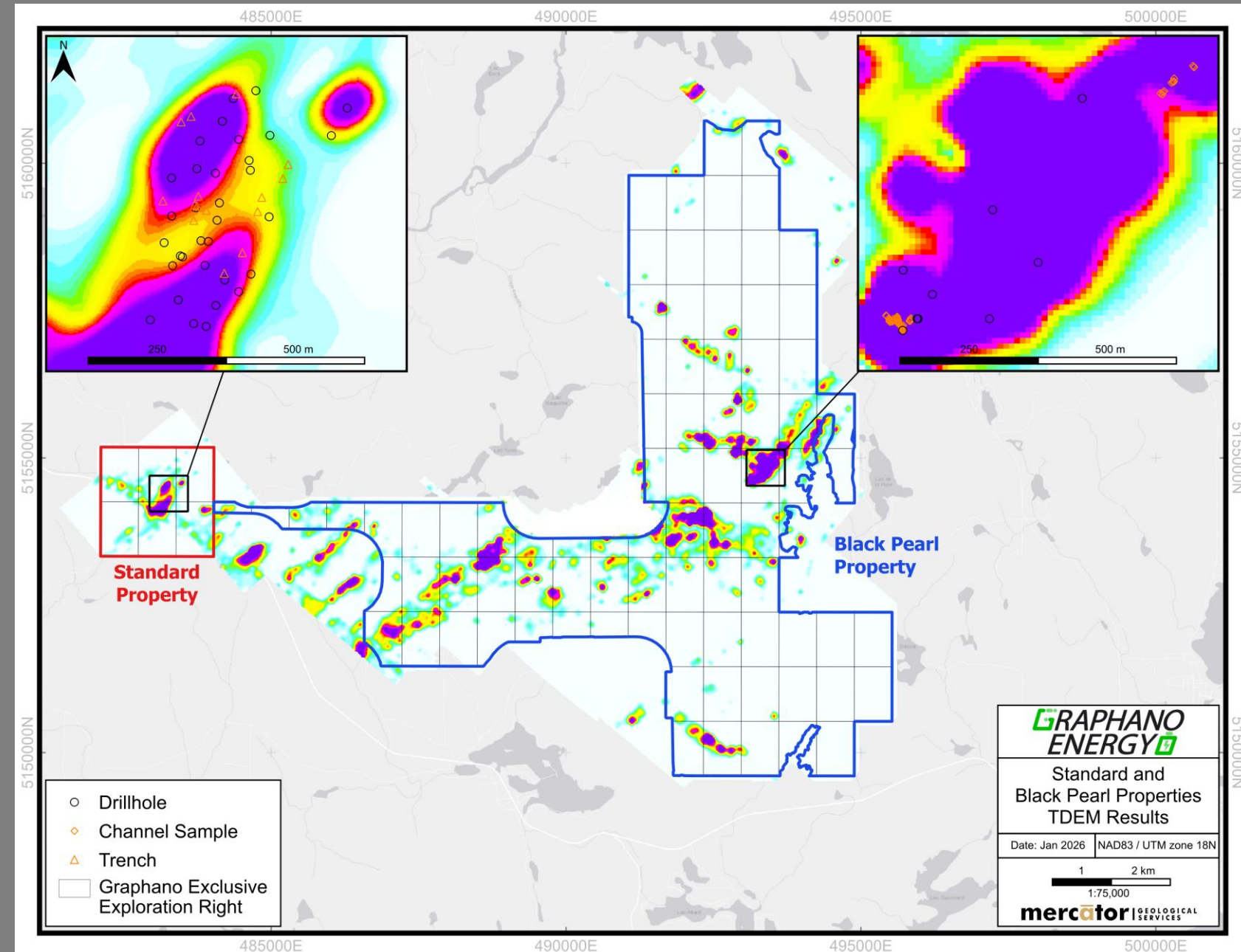
Hole BP25-01 intersected 11.33% graphitic carbon over 8.61 metres starting at 18.64m drilled depth

The eastern conductive trend extends approximately 1000m and remains open at depth

Key Drilling Results & District-Scale Potential

Significant Intercepts

- **BP25-06: 4.81% Cg over 12.25m including 6.63% Cg over 7.07m**
 - **ST25-08: 9.92% Cg over 3.20m and 4.93% Cg over 6.70m including 15.95% Cg over 1.60m**
 - **BP25-01: 11.33% Cg over 8.61m starting at 18.64m depth**
 - **ST25-03: Three zones of 7.37% Cg over 4.70m, 7.01% Cg over 3.14m, and 4.77% Cg over 6.50m**
-
- **Feb 2026 final airborne report: 6.5 km conductive trend with five priority target corridors.**
 - **Apr 2026: Engaged AI Resource Exploration for AI-assisted target ranking and real-time drill prioritization.**



Black Jack: New High-Grade Discovery (June 2026)

Spring 2026 Grab Sample Results

- New graphite showing ~1 km NW of the Black Pearl discovery
- **28 grab samples** across exposed graphite-bearing horizon
- Range: **12.0% to 26.5% Cg**; average **19.8% Cg**
- **25 of 28** samples > 15% Cg
- **15 of 28** samples \geq 20% Cg

"These results confirm high-grade graphite mineralization at Black Jack and strengthen our view that this new discovery is an important addition to the broader Black Pearl graphite trend."
— Dr. Luisa Moreno, CEO



Metallurgical Performance

Lac Aux Beaulaux (LAB)

- Concentrate grade: 95% Cg
- Open circuit recovery: 70%
- Projected closed circuit recovery: >90%



Standard Mine

- Concentrate grade: 94% Cg
- Recovery rate: 93%
- Optimization expected to further improve metrics



These metallurgical results demonstrate the high quality of our graphite deposits and their potential viability for battery-grade applications.



Project Development Timeline

2026

- Feb: Final airborne MAG/TDE, 6.5 km trend, 5 targets
- Apr: AI Resource Exploration engaged
- Jun: Black Jack discovery, up to 26.5% Cg
- Next: Phase II drilling at Black Pearl/Black Jack

2027

- Bulk sample extraction
- Metallurgical work and flowsheet optimization
- Feasibility study – Quarry model
- Financing

2027-2028

- Site Preparation
- Mining operations commence
- Integration into global graphite supply chain
- Partner with downstream end-users



Experienced Leadership Team



Dr. Luisa Moreno, CEO

Strategic minerals expert and Managing Director of Tahuti Global Inc. Works with government institutions on mineral development and supply chain enhancement. Serves on multiple boards developing critical minerals and green technologies.



Andrew Gainsbury, int. CFO

Canadian Chartered Accountant and former KPMG Partner. Specializes in interim management for troubled situations. Extensive experience as CEO/Chairman of public companies with strong governance background.



Roger Dahn, Director

30+ years in mining and exploration. Former exploration geologist with major mining companies. Involved in multiple base metals and gold discoveries that advanced to production. Registered Professional Geologist and Qualified Person.



Nathan Rotstein, Director

Mr. Rotstein has over 45 years of experience in the financial markets. He has consulted with numerous companies in the energy metals sectors including but not limited to cobalt, manganese, graphite and lithium. Nathan also has an extensive global network comprising international funds and high net worth individuals.



Martin Kepman, Director

Mr Kepman , in his 34 years of consulting experience, has consulted on a wide range of projects, in multiple industries ranging from software, soft goods, printing, food to mining. Martin is also the CEO of the junior mining company Manganese X Energy Corp.

Investment Opportunity & Contact Information

Financial Snapshot

Shares Outstanding	21,688,268
Options	2,165,000
Warrants	16,834,240
Fully Diluted Shares	40,687,508
Cash Position	\$0.6 million
Market Capitalization	\$2.3 million

June 9, 2026

Significantly undervalued relative to graphite resource size and quality.

Near-term catalysts:

- Follow-up prospecting at Black Jack and along the newly identified conductive trend, including exploratory drilling
- AI-driven target ranking with AI Resource Exploration
- Phase II drilling at Black Pearl / Black Jack

Contact Information

info@graphano.com

219 - 120 Carlton Street
Toronto, Ontario
M5A 4K2

Leave message at [Graphano.com](https://www.graphano.com)