





## Disclaimer

This presentation contains certain forward-looking statements that reflect the current views and/or expectations of Graphano Energy Limited ("Graphano" or the "Company") with respect to its performance, business and future events, including statements regarding the Company's beliefs regarding future exploration of its projects, future drilling locations and its plans and budgets, exploration and permitting timelines, future acquisition opportunities and exploration plans.

Forward-looking statements are based on the then-current expectations, beliefs, assumptions, estimates and forecasts about the business and the markets in which the Company operates, including that: the current price of and demand for minerals being targeted by the Company will be sustained or will improve; the Company's current exploration programs and objectives can be achieved; the Company will not experience any material accident, labour dispute or equipment failure; financing will be available if and when needed on reasonable terms; and the Company will be able to identify and acquire additional mineral interests on reasonable terms or at all. Investors are cautioned that all forward-looking statements involve risks and uncertainties, including: that the Company has a limited operating history; that resource exploration and development is a speculative business; that the Company may lose or abandon its property interests; that the Company's properties are in the exploration stage and without known bodies of commercial ore; that the Company may not be able to obtain all necessary permits and approvals on any of its properties; that environmental laws and regulations may become more onerous; that the Company may not be able to raise additional funds when necessary; potential defects in title to the Company's properties; fluctuations in currency exchange rates; changes in tax or royalty rates; operating hazards and risks; potential inability to find suitable acquisition opportunities and/or complete the same and other factors listed in the Company's public filings, including its Management's Discussion and Analysis, a copy of which is available under Graphano's profile at [www.sedar.com](http://www.sedar.com).

Although Graphano has attempted to identify important factors that could cause actual actions, events or results to differ materially from those described in forward-looking information, there may be other factors that cause, actions, events or results not to be as anticipated, estimated or intended. There can be no assurance that forward-looking information, or the material factors or assumptions used to develop such forward looking information, will prove to be accurate. Readers are cautioned not to place undue reliance on forward-looking information due to the inherent uncertainty thereof. The Company does not undertake any obligations to release publicly any revisions for updating any voluntary forward-looking statements, except as required by applicable securities law.



# The Value Proposition

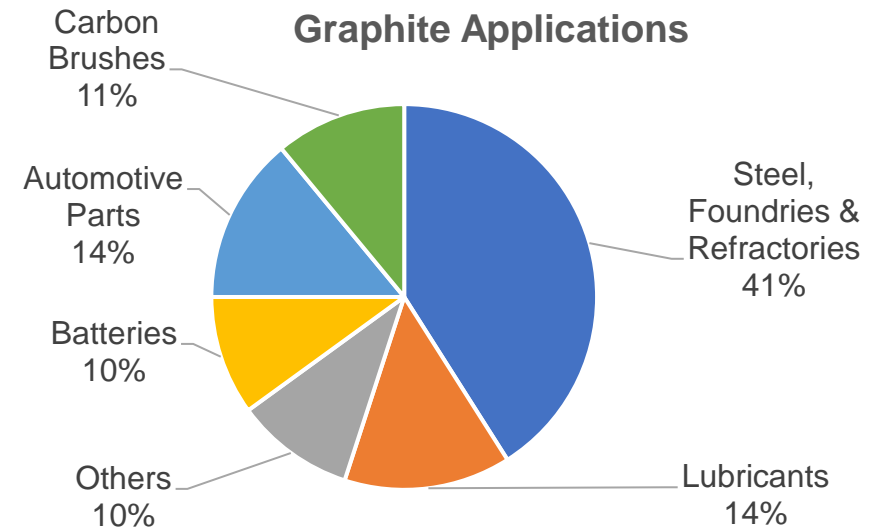
- **Great Infrastructure** – the Lac Aux Bouleaux (LAB) deposit is adjacent to the only graphite mine in Canada and the United States and has readily available power and transport infrastructure
- **Focus on near term production** – Given the positive historical results on the flake sizes and purity of LAB's graphite and the available infrastructure, the project could be fast-tracked to production
- **Great Upside** – As a new listed company with fast growth potential, Graphano offers high stock upside potential to investors





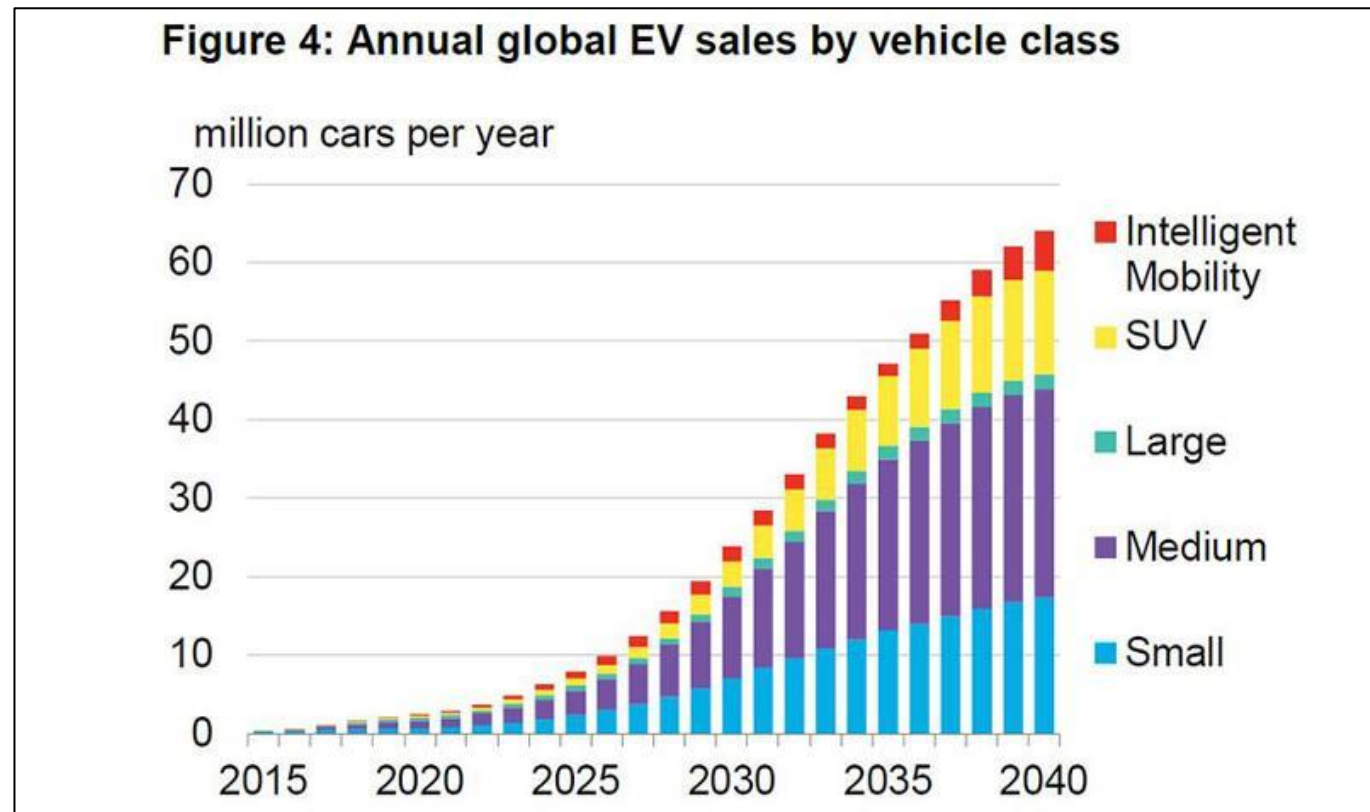
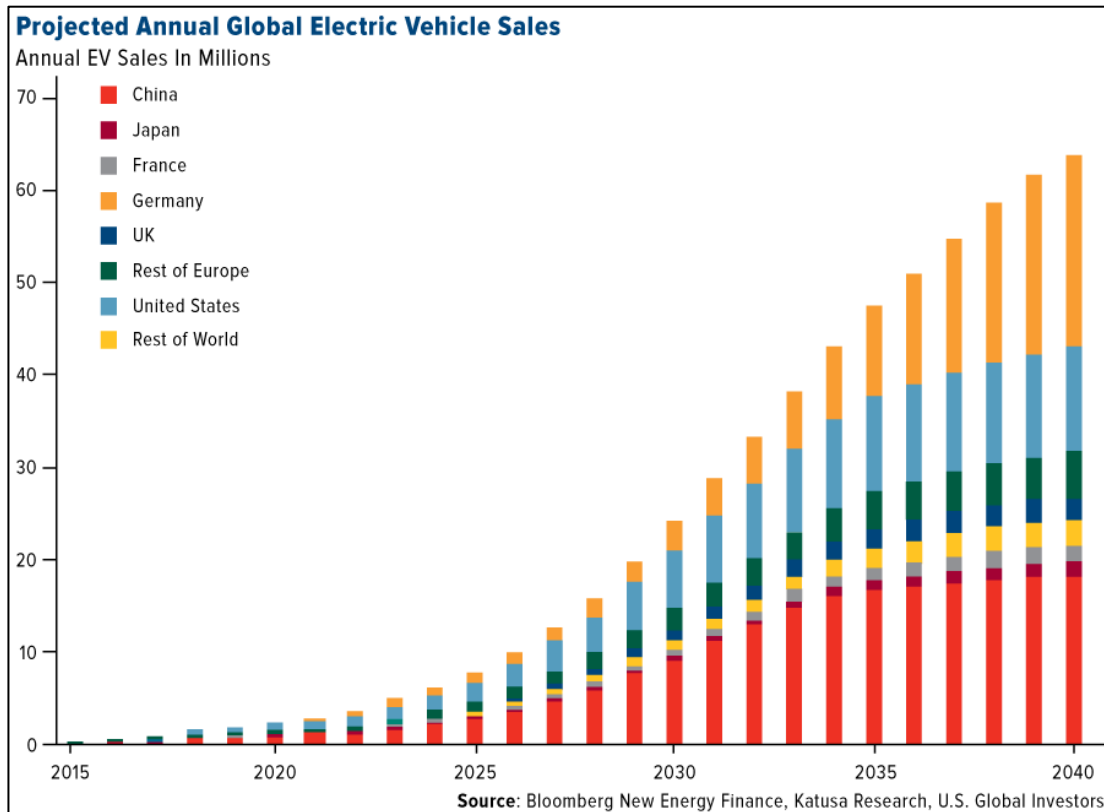
# About Graphite

- High melting point material essential to the refractory industry
- Good conductor of electricity used as an anode material, e.g., batteries
- Soft and slippery material used in pencils and as a dry lubricant
- China accounted for **77%** of natural graphite production in 2023



# EVs are Here to Stay

The EV Revolution is Driving Dramatic Demand for Electric Minerals  
As Graphite is the Main Anode Material for EV Batteries, Demand is Expected to Increase Significantly



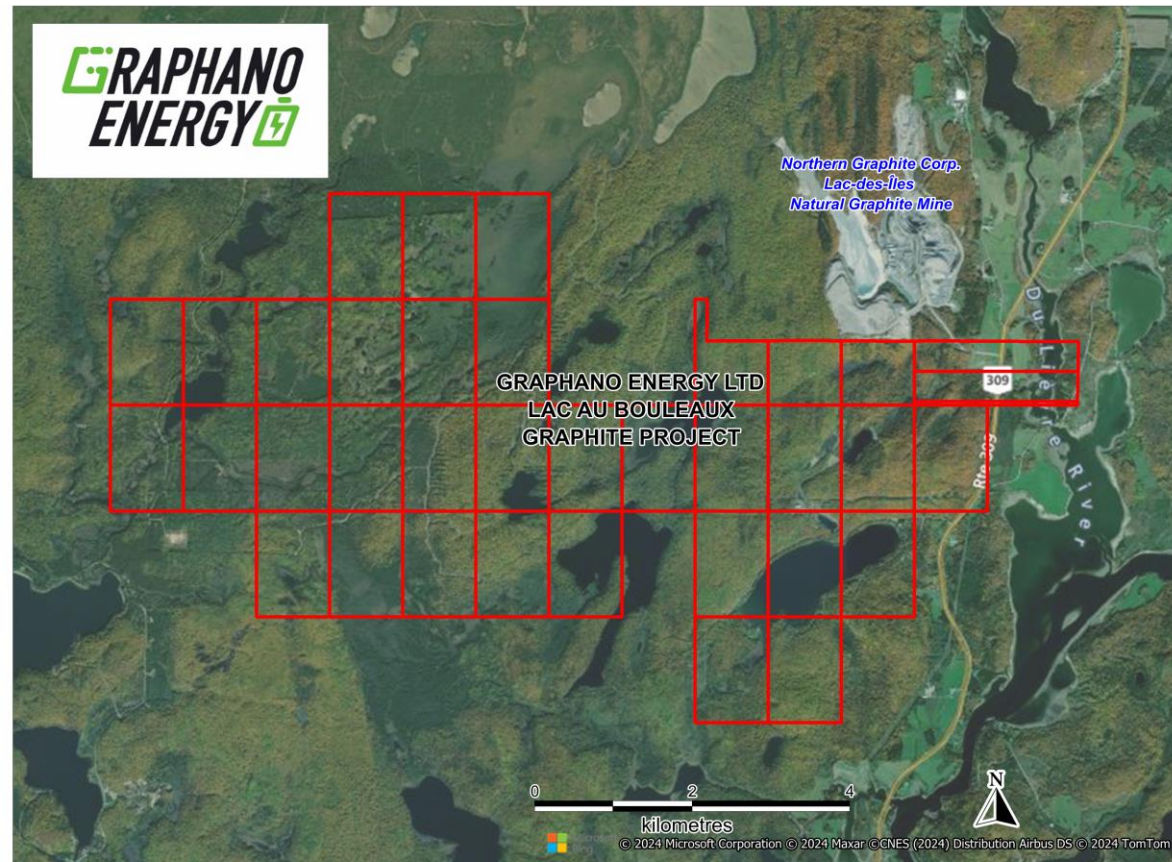


# Graphite Demand for EVs

- Total current production of natural graphite is **1.6 million tonnes**<sup>(1)</sup>
- As internal combustion engines vehicles are phased out, graphite demand for EV batteries alone could increase to **5 million tonnes**, opening the opportunity for dozens of new graphite mines to open in the next 5 to 10 years

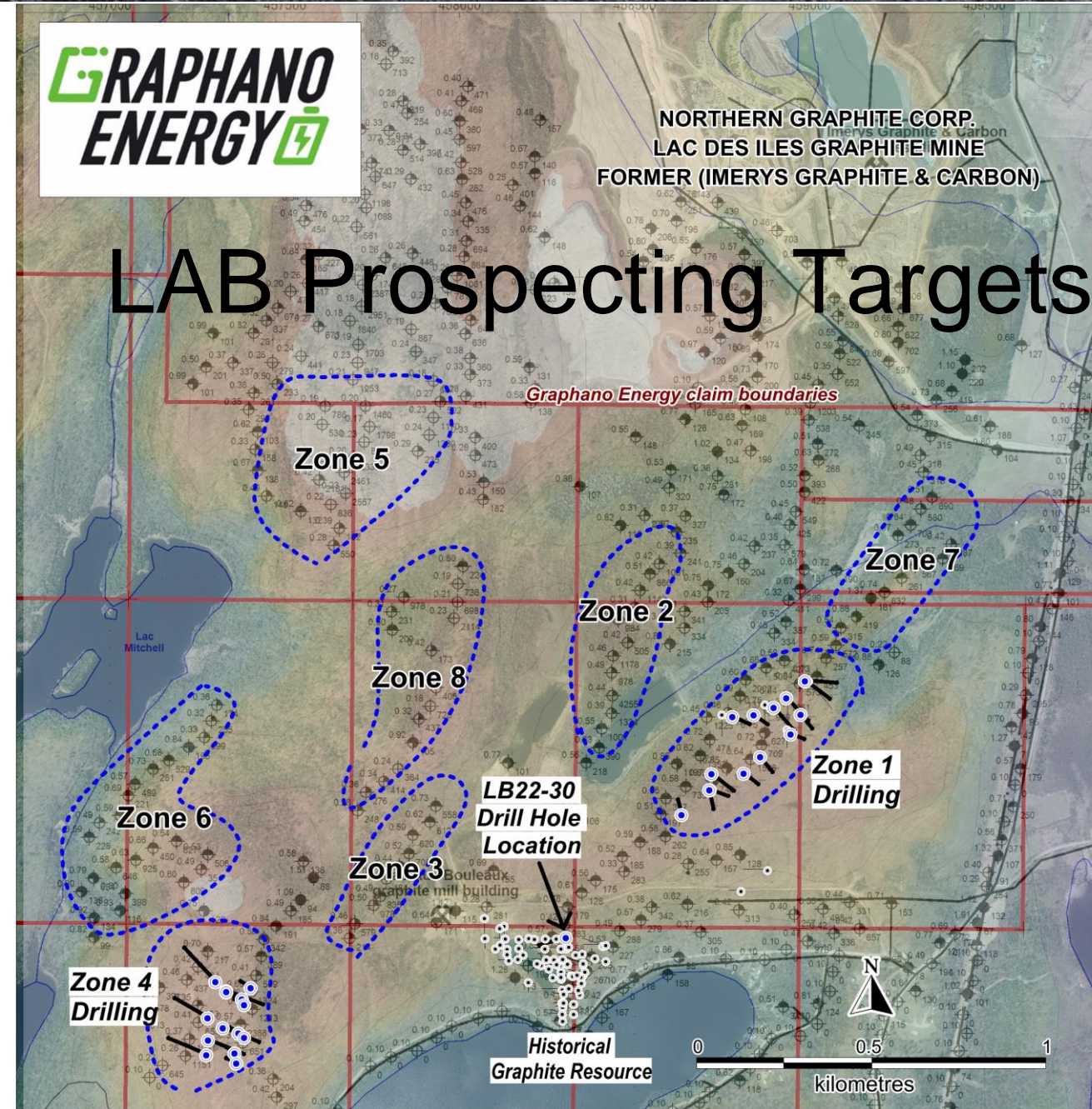
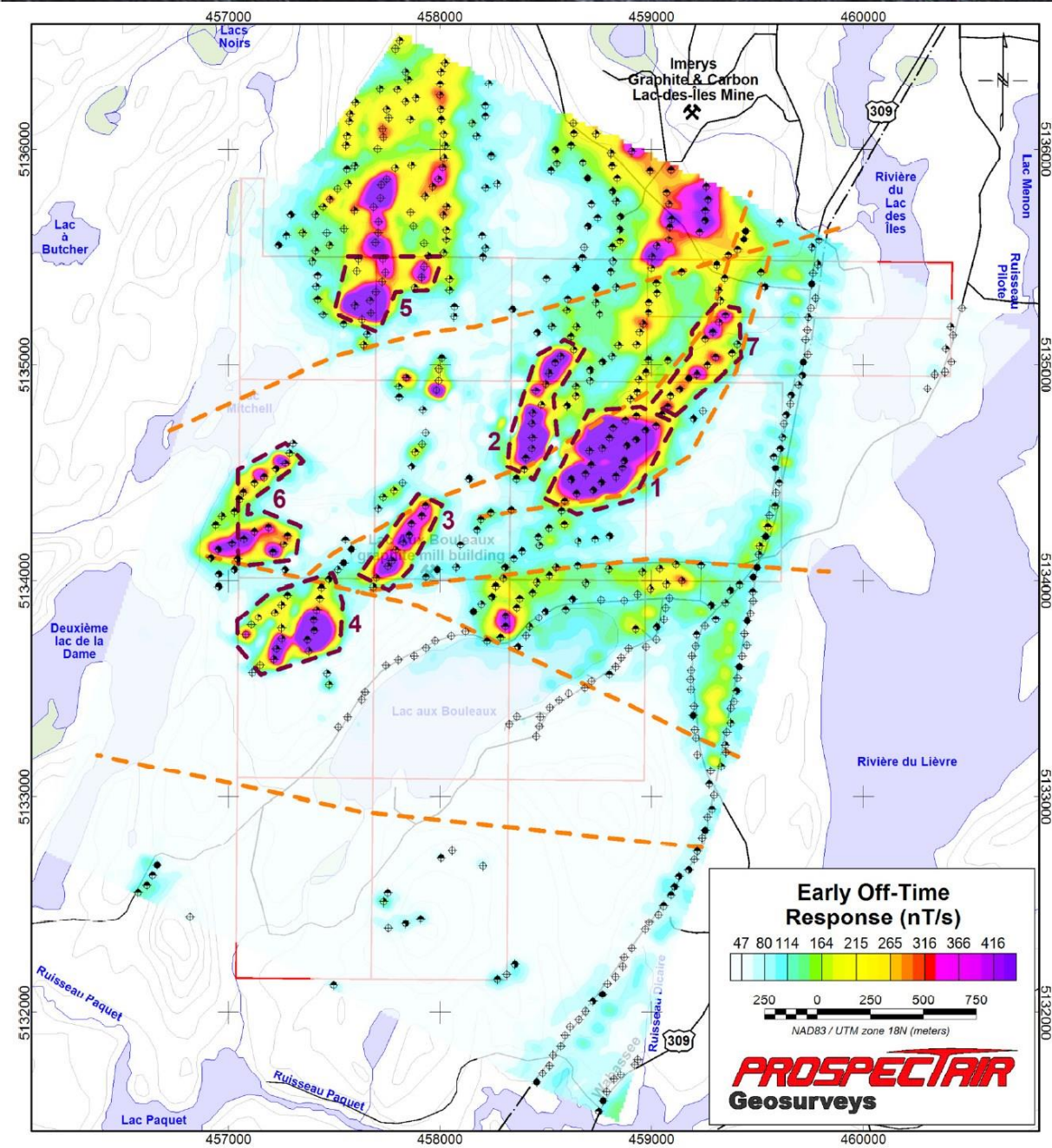
Number of Gigafactories needed worldwide (for cars)					Graphite Demand ~5 million tonnes per year <sup>(2)</sup> .
Gigafactory output	Car battery size	Factory car output	Number of vehicles needed	Number of Gigafactories	
20 GWh/yr	70 kWh	286,000	71 Million	249	
35 GWh/yr	70 kWh	500,000	71 Million	142	
105 GWh/yr	70 kWh	1.5 Million	71 Million	48	
150 GWh/yr	70 kWh	2.1 Million	71 Million	34	

(1) USGS 2023 (2) CleanTechnica

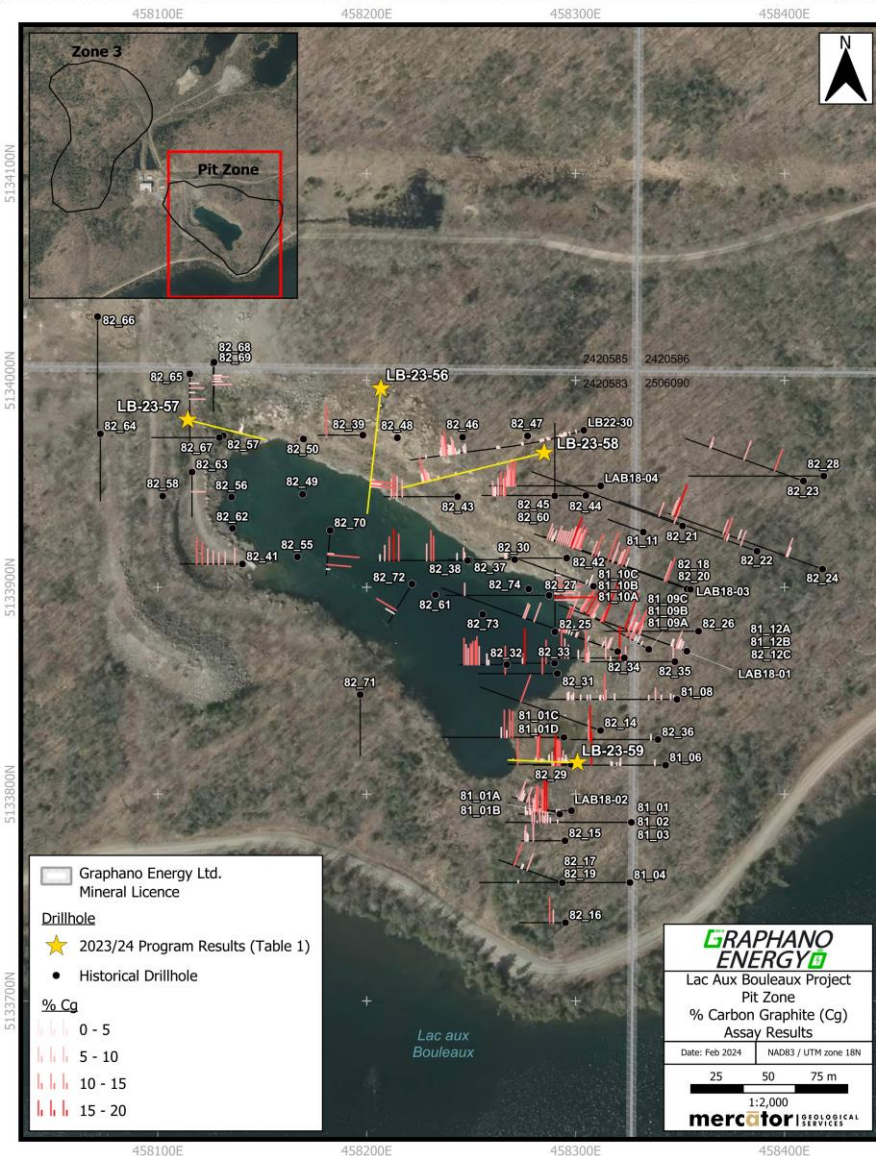


- Infrastructure is excellent with road access and electrical power on site
- The property is located contiguous to Timcal's Lac des Iles producing graphite mine
- Potential for near term production









### Key Highlights from the LAB Pit Zone

- The drilling has verified grade and spatial characteristics of graphite mineralization defined by historical drilling and correlates well with the 3D geological model being developed for ongoing Mineral Resource estimation work
- Multiple graphite horizons are present. The mineralization remains open primarily to the north and east for expansion
- Drill Hole LB23-59 intersected **8.26% graphitic carbon (Cg) over 4.80m** starting at 41.18m drilled depth
- Drill Hole LB23-58 intersected **5.89% Cg over 5.89m** starting at **92.47m** drilled depth
- Drill Hole LB23-56 intersected **6.91% Cg over 4.65m** starting at **71.3m** drilled depth



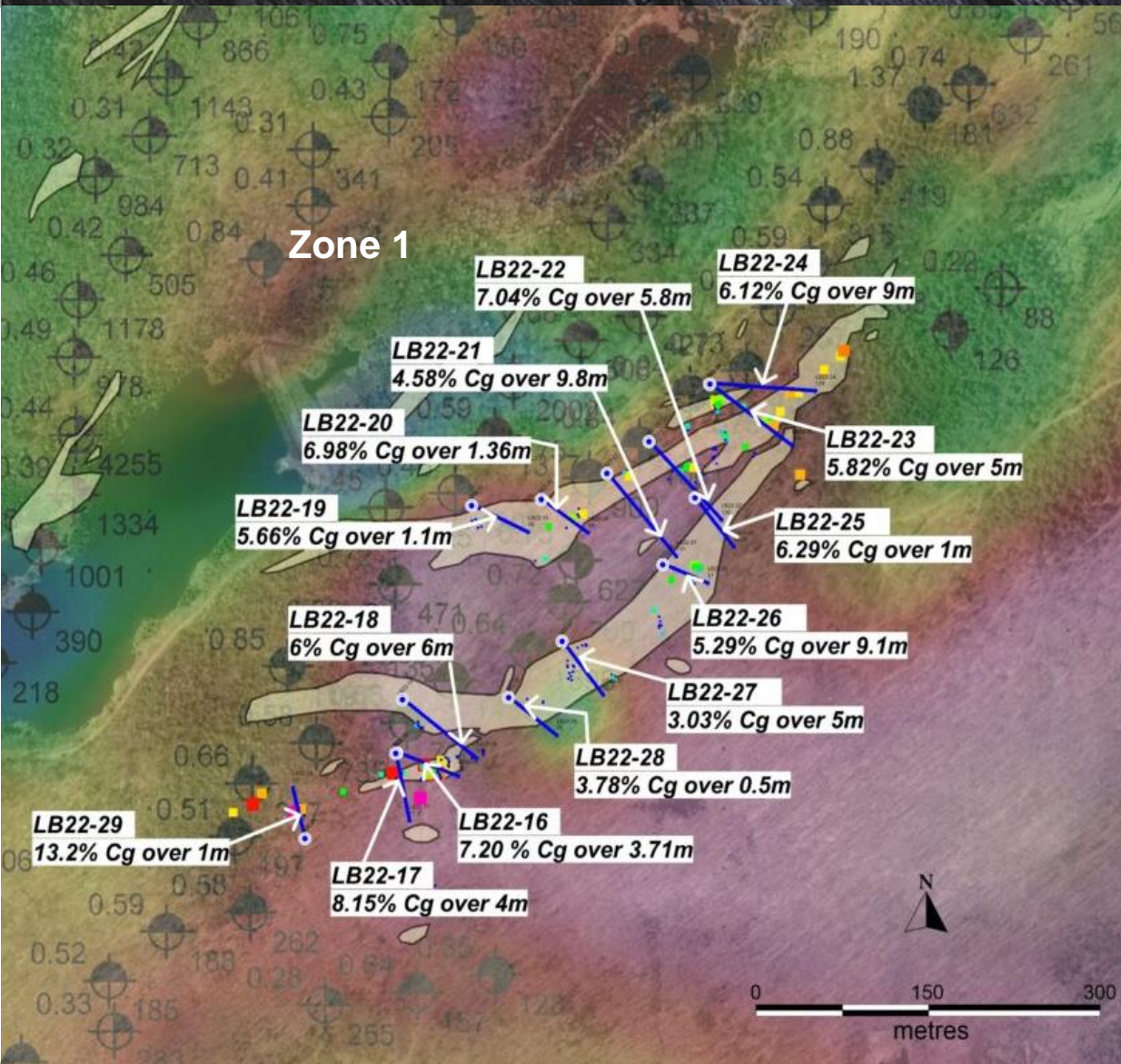
# Select Drilling Results

## Graphano drill program 2022 (Zone 1):

- Drill Hole LB22-30 intersected **6.34% graphitic carbon (Cg) over 11m** at 106m drilled depth including **9.15% Cg over 4.0m**
- Drill Hole LB22-18 intersected **6.0% graphitic carbon (Cg) over 6m** at 65m depth
- Drill Hole LB22-21 intersected **4.58% Cg over 9.8m** at 95.2m drilled depth

## Drill Hole LB22-24 intersected three zones as follows:

- Top zone of **6.12% Cg over 9.0m** at 43.5m  
Middle zone of **4.81% Cg over 2.0m** at 84.0m
- Lower zone of **6.09% Cg over 6.0m** at 90.0m
- Drill Hole LB22-26 intersected minimum of **5.29% Cg over 9.0m** at 23.9m drilled depth, including **7.51% Cg over 5.0m**





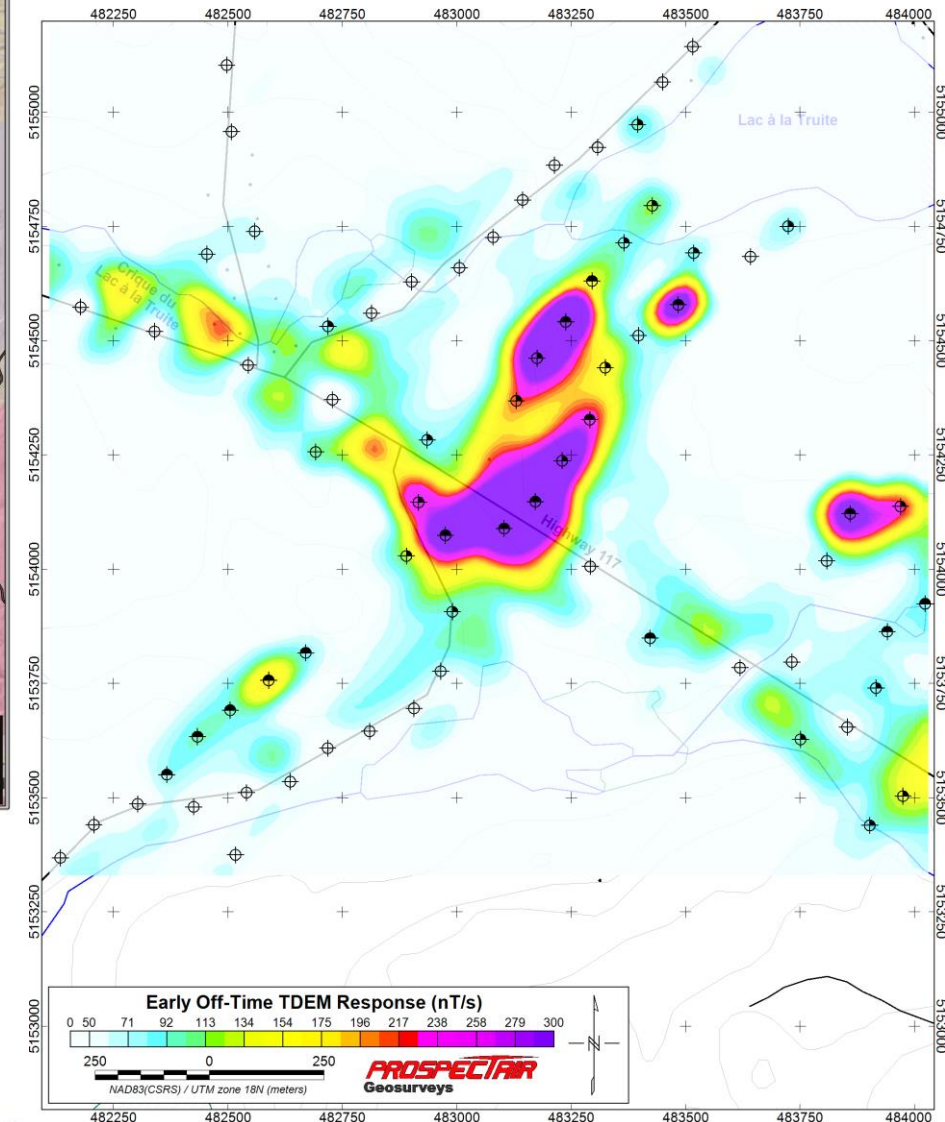
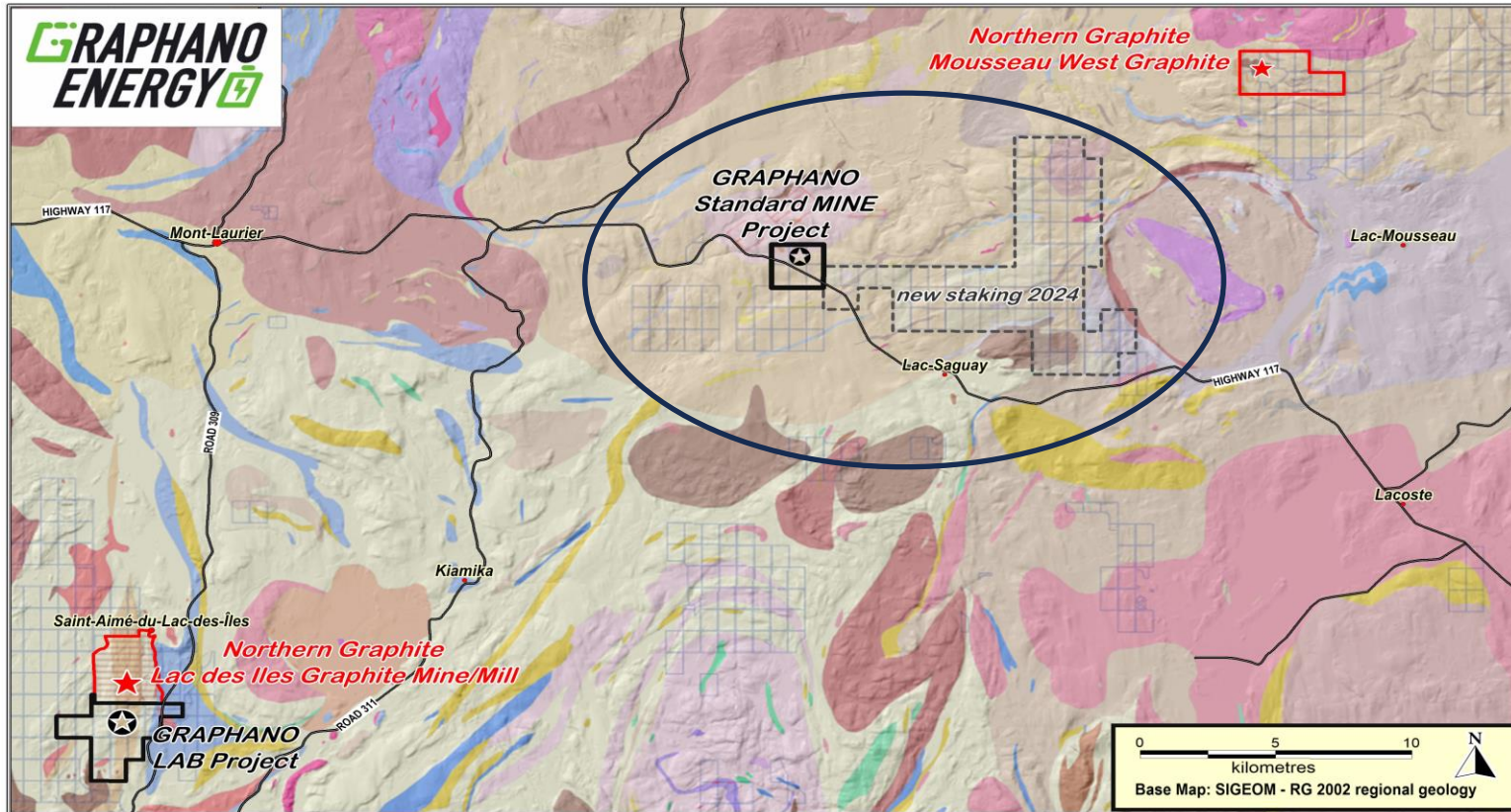


## 2024 Holes, include:

- ## 2023 Holes, include:

- Drill Hole LAB23-62 intersected **6.33% Cg over 13.82m** starting at 38.23m drilled depth
- Drill Hole LAB24-64 intersected **5.75% Cg over 14.42m** starting at 53.58m drilled depth, including **7.64% Cg over 7.64m**
- Drill Hole LB22-33 intersected **6.26% Cg over 13.7m** starting at 14.0m drilled depth
- Drill Hole LB22-45 intersected **9.09% Cg over 8.0m** starting at 68m drilled depth
- Drill Hole LB22-52 intersected **7.17% Cg over 9.0m** at starting at 36m drilled depth





- Graphano added 79 claims east of the historical Standard mine, for a total 4,265 hectares
- An airborne geophysical survey, outlined two graphite anomalies extending 500m and 600m in length through the historical graphite mine surface workings



### Key Highlights from the Eastern Graphite Trend

#### Current Holes - North Extension

- Drill Hole ST23-31 intersected **6.09% Cg over 13.06m** starting at 20.33m drilled depth, including **11.32% Cg over 4.47m** at 20.33m drilled depth
- Drill Hole ST23-24 intersected **5.60% Cg over 4.75m** at 52.96m drilled depth

#### Previous Holes - South Extension

- Drill Hole ST23-26 intersected **9.79% Cg over 18.84m** starting at 72.39m drilled depth
- Drill Hole ST23-17 intersected **11.88% Cg over 13.32m** at 28.61m drilled depth, including **14.44% Cg over 8.68m** at 31.13m drilled depth

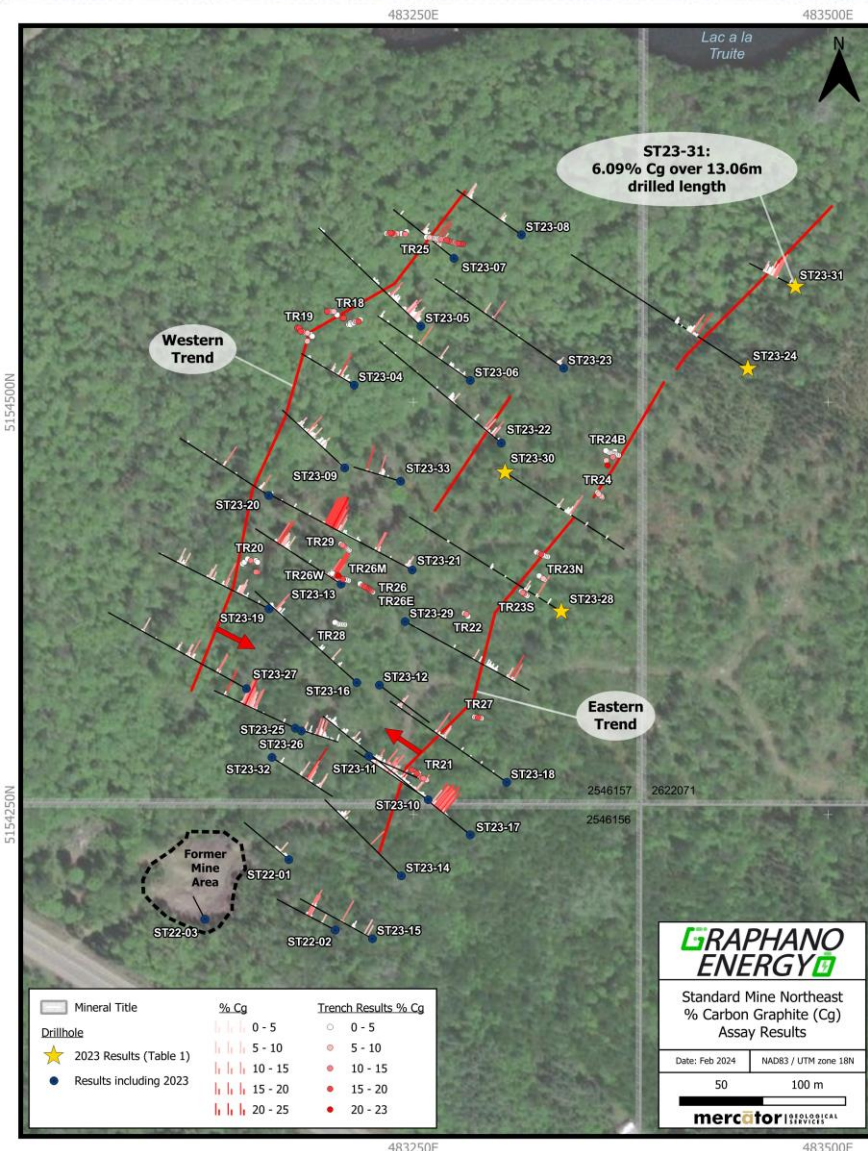
### Key Highlights from the Western Graphite Trend

#### Current Holes

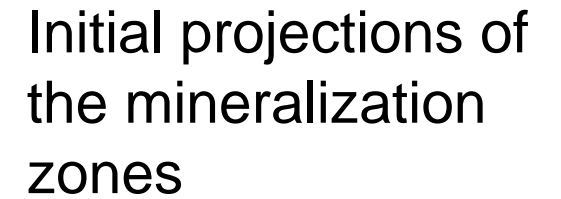
- Drill Hole ST23-21 intersected **15.57% graphitic carbon over 15.04m** starting at 68.79m drilled depth
- Drill Hole ST23-19 intersected **6.28% Cg over 5.23m** at 25.75m drill depth, and **5.57% Cg over 4.14m** at 40.43m drill depth and **4.89% over 5.26m** at 52.47m drill depth

#### Previous Holes

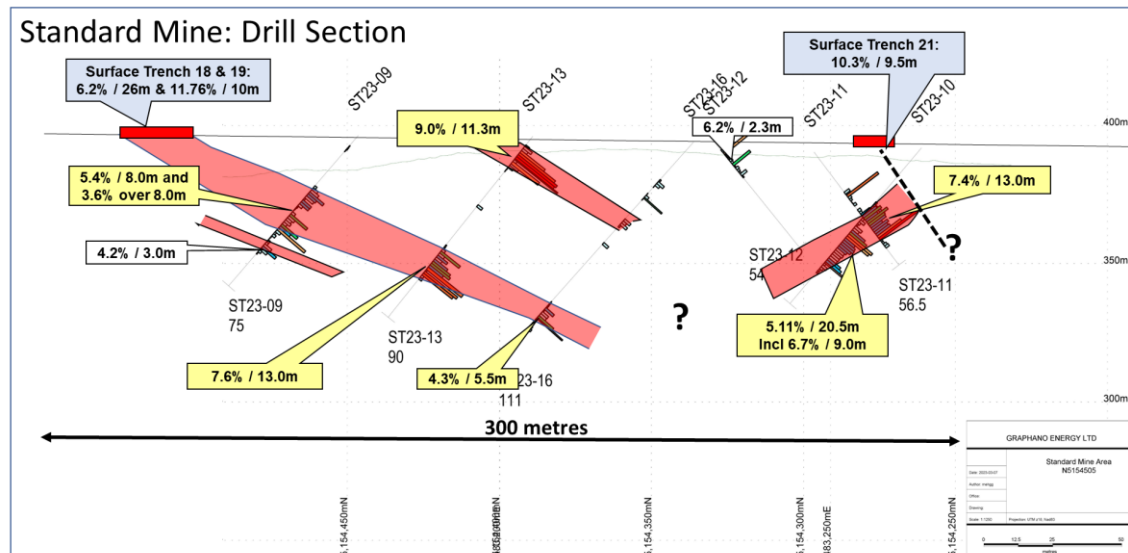
- Drill Hole ST23-13 intersected **8.99% Cg over 11.3m** starting at 4.2m drilled depth, and **7.65% Cg over 13.0m** at 56m drill depth
- Drill Hole ST23-05 intersected **5.79% Cg over 14.4m** at 4.6m drill depth







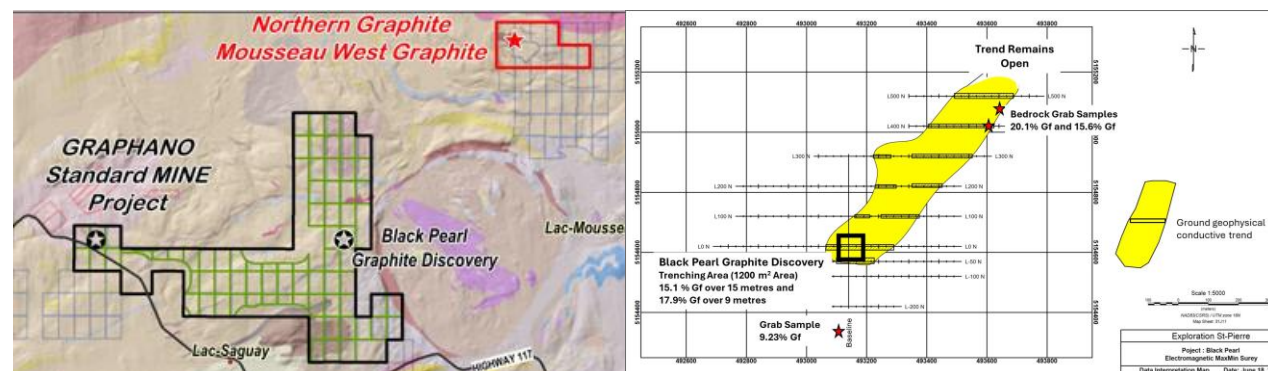
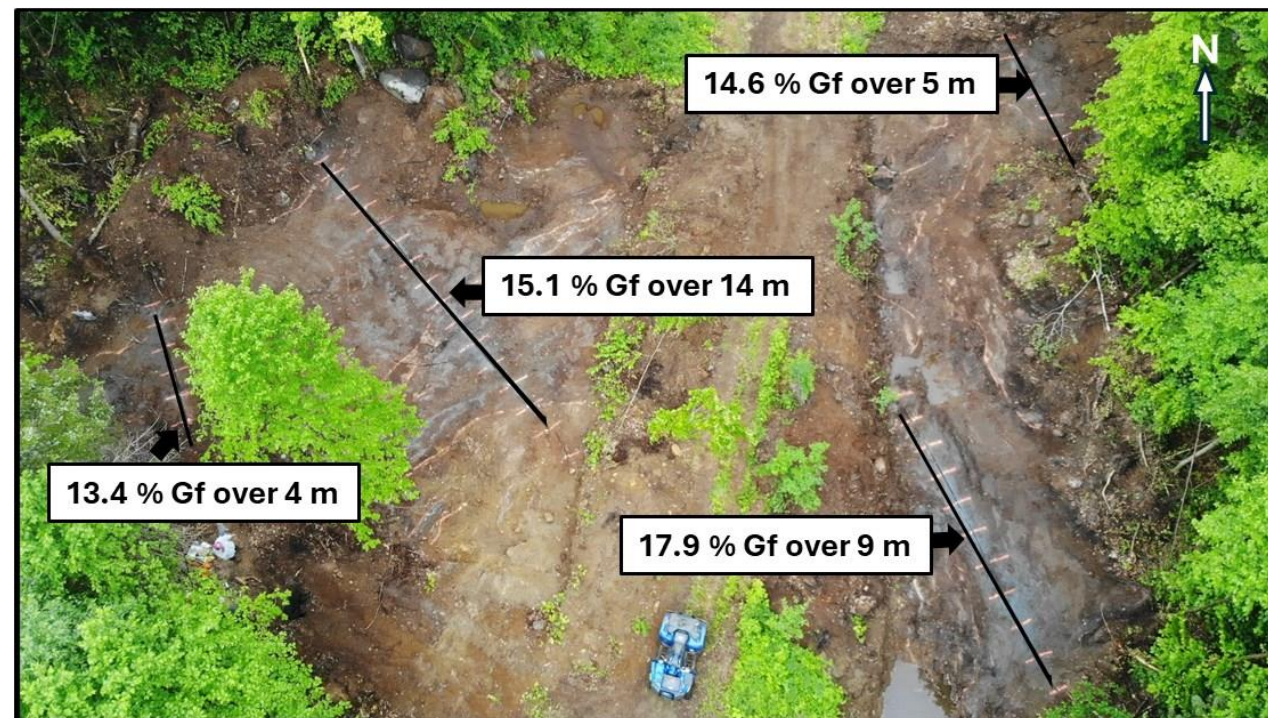
Standard Mine Graphite Project					
Exploration Drill Results					
Hole No.	From (m)	To (m)	Thickness (m)	% Cg	Thickness (m) times % grade
ST22-02	22.50	27.65	5.15	7.69	40
ST23-04	14.00	18.00	4.00	6.66	27
ST23-05	4.60	19.00	14.40	5.79	83
and	30.00	39.00	9.00	4.27	38
ST23-07	17.00	25.50	8.50	5.55	47
ST23-08	53.00	57.00	4.00	6.44	26
ST23-09	26.00	34.00	8.00	3.62	29
and	39.00	47.00	8.00	5.37	43
ST23-10	39.00	59.50	20.50	5.11	105
ST23-11	31.00	44.00	13.00	7.44	97
ST23-13	4.20	15.50	11.30	8.99	102
and	56.00	69.00	13.00	7.65	99
ST23-16	84.00	89.50	5.50	4.25	23





## Black Pearl Discovery Highlights

- **Survey Coverage:** The Black Pearl graphite trend is 75-150m wide, with an approximate strike length of 1,000m and remains open
- **42 channel samples:** Were collected within ~1,200 m<sup>2</sup> stripped bedrock area. Averaged 13.2% graphitic carbon (Cg)
- **High Grade Samples:** Channel sample results include 15.1% Cg over 14 metres and 17.9% Cg over 9 m. And trenches 700 metres northeast returned grades of 20.1% Cg and 15.6% Cg
- **Vast Unexplored Area:** The discovery area, and the remainder of the claim group remain unexplored





## Lac Aux Beauleaux Results:

- Several samples from different zones were tested
- Best results yielded a concentrate grade of 95% Cg
- Open circuit graphite recovery of 70%, close circuit projected to yield recoveries of 90% or higher
- Additional grinding/cleaning stage, should yield >96% Cg at recoveries of least 90 % under closed-loop

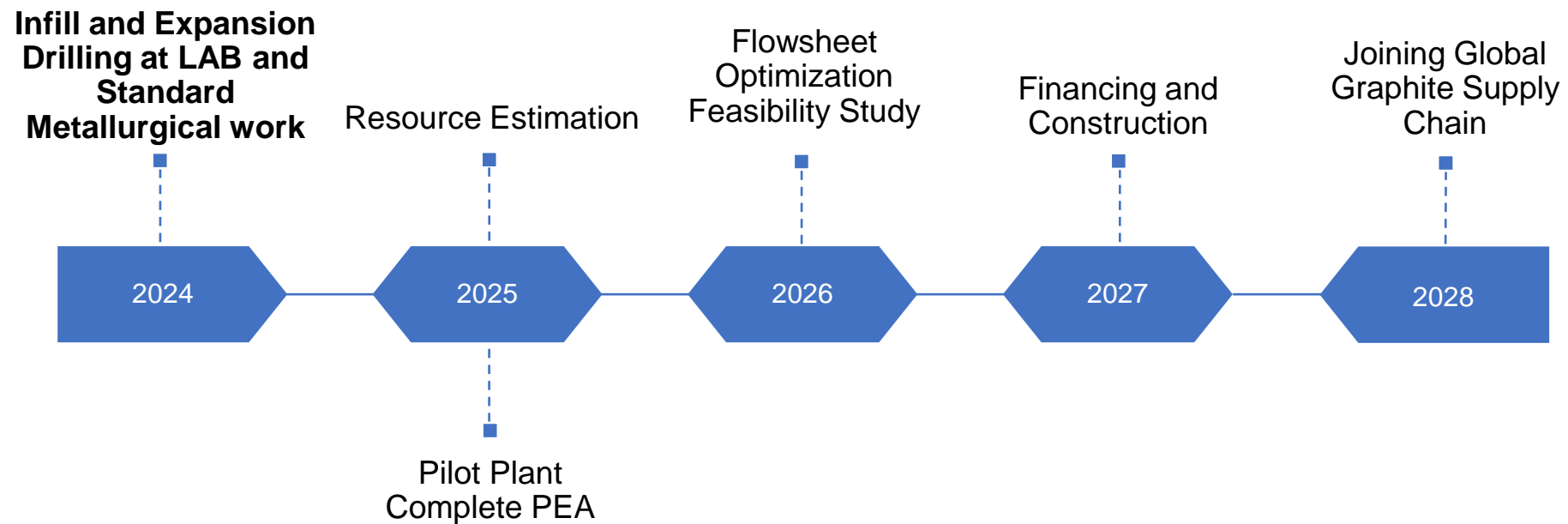
## Standard Mine Results:

- Graphite concentrate grading 94% Cg was produced, at 93% recovery rate
- Optimization tests are expected to lead to even higher grades and recoveries





# Project Development Timeline





# Management Team and Directors

**Luisa Moreno, Ph.D., CEO** - Dr. Luisa Moreno is the President and Chief Executive Officer of Graphano Energy Ltd. She is also the Managing Director of Tahuti Global Inc. In her diverse roles, Dr. Moreno serves on the boards of several companies developing strategic minerals and pioneering green technologies. Her expertise extends to strategic consulting where she works with government institutions focused on mineral development, value addition, and supply chain enhancements.

**Jay Richardson, CFO** - James A. (Jay) Richardson is a Canadian Chartered Accountant. He has practiced as a Partner in major firms like KPMG, prior to establishing his own practice. Specializing in interim management in troubled situations, he has served as the CEO or Chairman of listed public companies in many occasions and in many other CFO and private company situations. He has extensive public company governance experience from over a fifteen Board, and he is extensively active in charitable and community events.

**Roger Dahn, Director** - Mr. Dahn has over 30 years experience in the mining and exploration industry. His experience includes 2 decades as a exploration geologist of major mining companies. Mr. Dahn has been involved with a number of base metal and gold discoveries which advanced to development stage and production. Mr. Dahn is a registered professional geologist and Qualified Person as defined by National Instrument 43-101.

**Nathan Rotstein, Director** - Mr. Rotstein has over 45 years of experience in the financial markets. He has consulted with numerous companies in the energy metals sectors including but not limited to cobalt, manganese, graphite and lithium. Nathan also has an extensive global network comprising international funds and high net worth individuals.

**Martin Kepman, Director** - Martin Kepman and Associates Inc, founded in 1982, is a business development and management consulting firm owned and operated by its president Martin Kepman. Martin, in his 34 years of consulting experience, has consulted on a wide range of projects, in multiple industries ranging from software, soft goods, printing, food to mining. Martin is also the CEO of the junior mining company Manganese X.



# Financial Details and Contact

<b>Number of Shares</b>	17,088,268
<b>Options</b>	1.5 million
<b>Warrants</b>	13,208,948
<b>Shares fully diluted</b>	31,747,216
<b>Cash</b>	\$1.125 million
<b>Market cap</b>	\$1.7 million

November 2024

**Luisa Moreno, CEO and Director**

[moreno@graphano.com](mailto:moreno@graphano.com)

**219 - 120 Carlton Street  
Toronto, Ontario  
M5A 4K2**